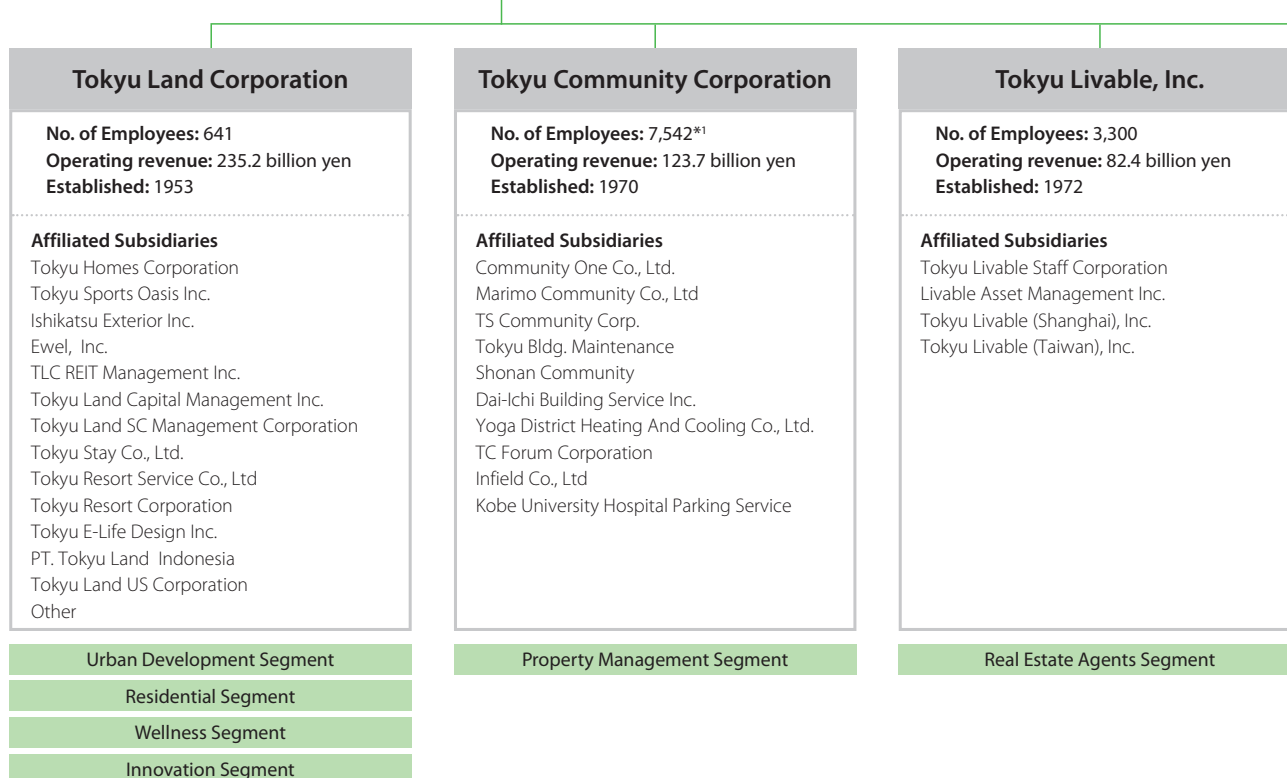


# Corporate Data/Stock Information

## Tokyu Fudosan Holdings Group

### Tokyu Fudosan Holdings Corporation



## Corporate Data/Stock Information

<b>Corporate name:</b>	Tokyu Fudosan Holdings Corporation
<b>Address:</b>	TK Minami Aoyama Building, 2-6-21 Minami Aoyama, Minato-ku, Tokyo 107-0062
<b>Representative:</b>	Yuji Okuma, President and Representative Director
<b>Capital:</b>	60 billion yen
<b>Business activities:</b>	Management and administration of the Tokyu Fudosan Holdings Group
<b>Established:</b>	October 1, 2013
<b>No. of employees:</b>	52 20,421 (consolidated)

<b>Listed stock market</b>	Tokyo Stock Exchange
<b>Securities code:</b>	3289
<b>Share trading unit:</b>	100 shares
<b>Number of shares authorized to be issued by the Company:</b>	2,400,000,000 shares
<b>Number of shares issued:</b>	640,830,974 shares
<b>Fiscal year:</b>	April 1 to March 31 of the following year
<b>Ordinary General Meeting of Shareholders:</b>	June each year
<b>Shareholders' record date:</b>	Ordinary General Meeting of Shareholders: March 31 Profit distribution: March 31 Interim dividend: September 30 Other: Certain days for which prior notice is provided. The method of public notice is by electronic means.

<b>Shareholder registry administrator:</b>	Sumitomo Mitsui Trust Bank, Limited 1-4-1 Marunouchi, Chiyoda-ku, Tokyo Sumitomo Mitsui Trust Bank, Limited
<b>Handling office of shareholder registry administrator:</b>	Sumitomo Mitsui Trust Bank, Limited 1-4-1 Marunouchi, Chiyoda-ku, Tokyo Sumitomo Mitsui Trust Bank, Limited Stock Transfer Agency
<b>Contact:</b>	Sumitomo Mitsui Trust Bank, Limited Network of nationwide branches
<b>Mailing address:</b>	2-8-4 Izumi, Suginami-ku, Tokyo, 168-0063 Sumitomo Mitsui Trust Bank, Limited Stock Transfer Agency
<b>Telephone inquiries:</b>	+81 -120-782-031 (free dial)

Tokyu Hands, Inc.	Tokyu Housing Lease Corporation	National Students Information Center Co., Ltd.
<b>No. of Employees:</b> 2,900 <b>Operating revenue:</b> 96.4 billion yen <b>Established:</b> 1976	<b>No. of Employees:</b> 743* <sup>1</sup> <b>Operating revenue:</b> 40 billion yen <b>Established:</b> 2014	<b>No. of Employees:</b> 359* <sup>1</sup> <b>Operating revenue:</b> -* <sup>3</sup> <b>Established:</b> 1988
<b>Affiliated Subsidiaries</b> HANDS LAB INC. Tokyu Hands Segment	<b>Affiliated Subsidiaries</b> Tokyu Corporate Housing Management Inc. Residential Partners Co., Ltd.	<b>Affiliated Subsidiaries</b> Nasic I Support Co., Ltd. Nasic Educational Solution Co., Ltd. Hokuwa Corporation Sigma Japan K.K. K.K. Homic
Tokyu Hands Segment	Urban Development Segment	Urban Development Segment

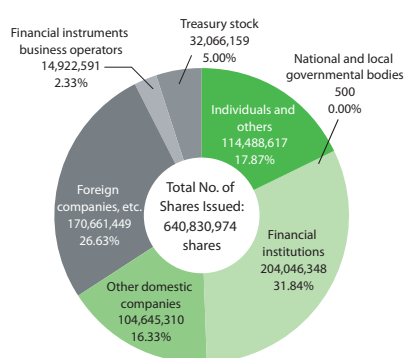
\*1 Figures for Tokyu Community Corporation, Tokyu Housing Lease Corporation, and National Students Information Center Co., Ltd. are as of the end of March 2017

\*2 Net sales data is for fiscal 2016 (non-consolidated)

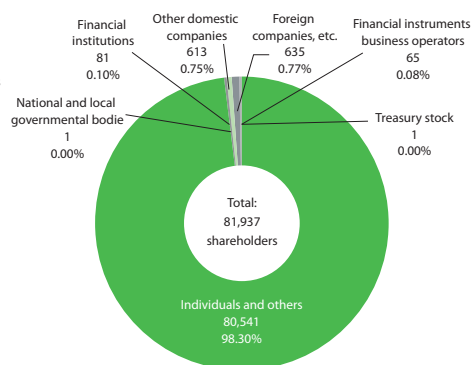
\*3 National Students Information Center Co., Ltd. was established in July 2016, so figures for the fiscal period ending March 2017 are undisclosed

As of March 31, 2017

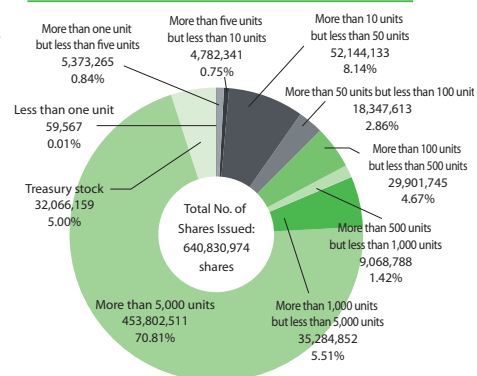
### Breakdown of Shares by Shareholder



### Breakdown of the Number of Shareholders



### Distribution of Stock by the Size of Holdings



Major Shareholders	Number of shares held (thousands)	Percentage of Shares Held
Tokyu Corporation	96,879	15.91%
The Master Trust Bank of Japan Ltd. (Trust Account)	33,301	5.47%
Japan Trustee Services Bank Ltd. (Trust Account)	30,847	5.07%
Sumitomo Mitsui Trust Bank, Limited	21,008	3.45%
The Dai-ichi Life Insurance Company, Limited	14,918	2.45%
Japan Trustee Services Bank Ltd. (Trust Account 9)	9,716	1.60%
Japan Trustee Services Bank Ltd. (Trust Account 5)	8,769	1.44%
CBHK S/A PBG CLIENTS SG	8,687	1.43%
Nippon Life Insurance Company	8,107	1.33%
Japan Trustee Services Bank Ltd. (Trust Account 4)	7,616	1.25%

(Notes)

1. Tokyu Fudosan Holdings Corporation has 32,066,159 shares of treasury stock, which are excluded from the above breakdown of major shareholders.
2. The percentage of shares held is calculated after deducting treasury stock.